

The fund's objective is to attain a mix of regular income stream and possible capital growth via investments in listed equities, debt instruments and other assets that are permissible under the Shariah Principles

### Income & Growth Fund

Smart Investment Choice for Constant Capital Growth

Fund Fact Sheet 31 March 2011

#### INVESTOR PROFILE

Suitable for all investors who are seeking a fully managed and balanced portfolio of investments that conform to the Shariah Principles and has investment horizon of 5 years or more.

#### FUND DETAILS AS AT 31 March 2011

Unit In Circulation	: 30.098 million
Unit NAV	: RM 0.6489
Financial Year	: November 30
Fund Category	: Balanced Fund (Shariah)
Fund Inception	: September 17, 2002
Initial Sales Charge	: 5.50% of NAV per unit
Annual Management Fee	: 1.00% of NAV (Bond) 1.50% of NAV (Equity)
Benchmark	: 60% of the FBM EMAS Shariah Index 40% of 12-month General Investment Account-rates
Asset Allocation	: Min 20% to Max 70% in equities : Min 20% to Max 70% in debt instrument : Min 2% in cash and cash equivalent

#### SHARIAH COMMITTEE MEMBERS

- Dato' Dr. Abdul Halim bin Ismail (Chairman)
- Datuk Dr. Syed Othman bin Syed Hussin Al Habshi
- Prof. Dato' Dr. Abdul Monir bin Yaacob
- Prof. Dato' Dr. Mahmood Zuhdi bin Hj Ab. Majid

#### FUND MANAGER'S REVIEW

##### Market Review

##### Equity

The first half of March saw an increase in volatility in the Malaysian equity market due to the March 11 earthquake in Japan and the continuing crisis in the Middle East & North America (MENA) region especially in Libya. However, the market managed to recover by month end and finish on a positive note. For the month, the FBM KLCI gained 54 points or 3.6% to close at 1,545 points. The broader index FBM EMAS gained 3.9% to 10,612 points. Smaller caps outperformed as the FBM Small Cap Index rallied 4.7% to 12,996 points. Among the regional bourses, India and Korea posted the strongest gains whilst unsurprisingly, Japan declined.

On the local corporate front, Tenaga Nasional Bhd has acquired 66.5 million Integrax Berhad shares, representing a 22.12% equity interest in Integrax for a total consideration of RM106.5 million equivalent to RM1.60 per Integrax share as part of its efforts to improve operational efficiency.

##### Fixed Income

Local government bonds continued to trend lower, with the 5-year Malaysian Government Securities (MGS) benchmark declining the most. The bearish tone was due to concerns of further policy rate tightening amidst the recent jump in inflation data. On the economic front, export growth slowed further to 3.0% YoY for the month of January 2011. Industrial output also got off to a weak start and posted a YoY growth rate of 1.0% whilst inflation accelerated to 2.9% in February 2011. Meanwhile the reopening of RM4.0 billion of 5.5-year MGS attracted a healthy bid-to-cover ratio of 2.24 times with an average yield of 3.57%. However, the demand for the RM4.0 billion of 3.5-year GII at the end of the month was lower, drawing a bid-to-cover ratio of only 1.43 times with an average yield of 3.51%. The 3-, 5-, 7-, 10- and 20-year benchmark yields rose by 0.1 to 16 bps to 3.47%, 3.65%, 3.81%, 4.10% and 4.54% respectively.

Meanwhile Bank Negara Malaysia (BNM) during its March policy meeting raised the statutory reserve requirement for banks to 2% from 1%. However BNM left the overnight policy rate unchanged at 2.75%. BNM also forecasted GDP growth at 5-6% YoY for 2011 supported by good labour conditions, higher disposable incomes and the Economic Transformation Programme Initiatives. BNM also commented that the degree of monetary accommodation may be reviewed given the sustained growth in the economy and risks of inflation as there are some signs that domestic demand factors could result in possible upward pressure on prices in the later part of the year.

##### Manager's Comments

##### Equity

The markets continue to focus on the Economic Transformation Programme (ETP) / Government Transformation Programme (GTP) rollout details, as construction projects are being announced. Corporate profits are on track, with minimal revisions and far fewer surprises. Banks continue to raise cheap funding to bolster balance sheets to meet and exceed Basle III requirements.

We expect the Malaysian Market to remain flattish for the next 1-2 months as markets pause after the rebound. In valuation, the Malaysian Market PER is 14X, a 16% premium over the region. On a P/Book calculation, the Market looks fairly valued at 2.3X. However, if the ETP/GTP rollout is accelerated, we may see upwards revisions to Market ranges and a possible rally. For our portfolios, we remain positioned fairly invested in the markets, paying careful attention to risk and volatility, and modifying these parameters through stock picking.

##### Fixed Income

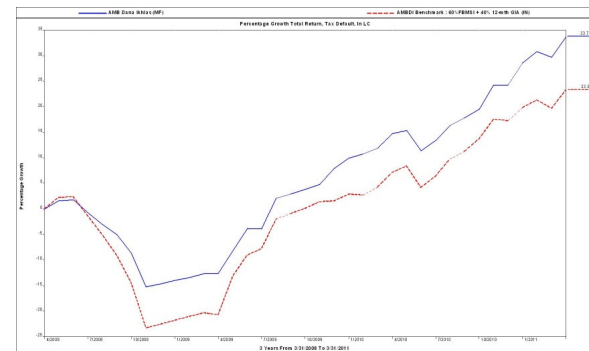
We expect BNM to start raising interest rates as early as May 2011, taking the OPR to 3.25% by year end.

The Private Debt Securities market has been experiencing a bit of a dry spell in the first quarter this year. We expect the issuance pipeline to pick up momentum from the second quarter onwards taking its cue from implementation of some of the major ETP like the KL-MRT and infrastructure related projects. It is likely that the bond issuances related to the ETP projects will be highly rated, possibly guaranteed by the Government or Danajamin. We foresee a neutral and stable credit environment.

We still favour Corporates over Sovereigns, in particular AA and A rated segment for yield enhancement. Credit selection remains key. For MGS, we will buy on weakness and adopt a more active trading stance. We remain of neutral duration in view of the rising interest rate environment and higher inflationary expectations.

#### PERFORMANCE RECORD

##### 3 Years Growth Total Return



##### Cumulative Total Return

	Fund (%)	Rank
6 - Month (30 September 2010 - 31 March 2011)	11.84	1/19
1 - Year (31 March 2010-31 March 2011)	16.56	1/19
3 - Year (31 March 2008-31 March 2011)	33.68	4/19
5 - Year (31 March 2006-31 March 2011)	53.88	10/18

\* Source : Lipper(G) - Category of Mixed Asset - Islamic

##### High/Low NAV (RM)

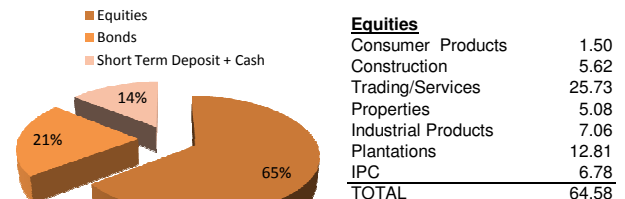
	High	Low
6 - Month (30 September 2010 - 31 March 2011)	0.6509	0.5812
1 - Year (31 March 2010-31 March 2011)	0.6509	0.5312
3 - Year (31 March 2008-31 March 2011)	0.6509	0.4058
5 - Year (31 March 2006-31 March 2011)	0.6509	0.3925

##### Income Distribution

2010	Net (sen per unit)
	NIL

\*Source : Extracted from the annual report of AMBDI which has been audited by our external auditor

##### Asset Allocation as at 31 March 2011



Equities	
Consumer Products	1.50
Construction	5.62
Trading/Services	25.73
Properties	5.08
Industrial Products	7.06
Plantations	12.81
IPC	6.78
<b>TOTAL</b>	<b>64.58</b>

##### Top 5 Largest Holdings

- 1) SIME DARBY BERHAD - EQUITY
- 2) AXIATA GROUP BERHAD - EQUITY
- 3) KONSORTIUM LEBUH UTARA TIMUR - BOND
- 4) PADIBERAS NASIONAL BERHAD - BOND
- 5) BAYU PADU SDN BHD - BOND

Based on the fund's portfolio returns as at April 15, 2011, the Volatility Factor (VF) for this fund is 9.0 and its Volatility Class (VC) is classified as "Low" (source: Lipper). The VF means there is a possibility for the fund in generating an upside return or downside return around this VF. The VC is assigned by Lipper based on quintile ranks of VF for qualified funds. The fund's portfolio may have changed and there is no guarantee that the fund will continue to have the same VF or VC in the future. Presently, only funds launched in the market for at least 36 months will display the VF and its VC.

Investors are advised to read and understand the contents of the Master Prospectus dated September 17, 2010 before investing. This prospectus has been registered and lodged with the Securities Commission. Among others, investor should consider the fees and charges involved. The price of units and distributions payable, if any, may go down as well as up. Past performances of the fund should not be taken as indicative of its future performance. Units will only be issued on receipt of an application form referred to in and accompanying the Prospectus, which is obtainable at Amanah Mutual Berhad or any of its distribution branches.