



Morning Star Rating
Lipper Total Return
Lipper Consistent Return
Lipper Preservation Return



AMB Index-Linked Trust Fund



The fund's objective is to achieve an investment result that tracks the performance of the benchmark FBM KLCI.

Index Fund

Smart Investment Choice for Constant Capital Growth
Fund Fact Sheet 30 September 2011

INVESTOR PROFILE

This fund is suitable for investors who:-

- Desire returns that are consistent with the performance of FBMKLCI.
- Have a medium to high-risk tolerance.

FUND DETAILS AS AT 30 SEPTEMBER 2011

Unit In Circulation	: 19.689 million
Unit NAV	: RM 0.8089
Financial Year	: October 31
Fund Category	: Equity Fund
Fund Inception	: May 16, 2002
Initial Sales Charge	: 4.00% of NAV per unit
Annual Management Fee	: 1.00 % of NAV
Benchmark	: FBM KLCI
Asset Allocation	: Min 90.0% to Max 99.5% in equities : Min 0.5% to Max 10.0% in liquid assets

FUND MANAGER'S REVIEW

Market Review

The FBM KLCI shed 60 points m-o-m in September to close at 1387.13 points (or +0.9% m-o-m) following a major sell off across the globe commencing in mid September. The local market was also weighed down by the volatile crude oil prices and concerns over the weakening global economy. Among the worst hit include major heavyweights with large foreign shareholdings.

The sell down was evidenced with the ringgit finished the month at RM3.1890 per USD, down 6.8% m-o-m. The crude oil was down 11.2% m-o-m to US\$79.20, as global growth worries outweighed positive US economic data.

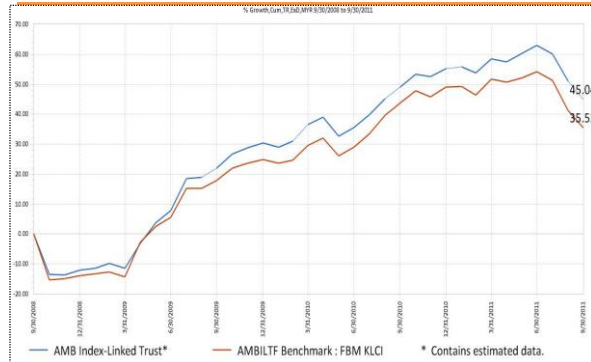
Globally, as recession threat is not yet over and done, and remain key drag to growth, international investors went into panic selling, causing major sell off across various markets. The commodity market including gold, which is deemed as another safe haven tool, and emerging markets were not spared as investors sought to realize profits in profitable assets to cover for losses in developed markets. The US Treasuries were the main beneficiary as investors sought for safe haven.

Manager's Comment

The fund continues to closely mirror the performance of the benchmark reflected by the high correlation of 99.31% against the benchmark FBMKLCI. Based on the NAV of RM0.8089, the Tracking Error as at 30 September 2011 stands at 1.373%. The Index fund was rebalanced in order to maintain the cash balance according to the monthly cash commitments.

PERFORMANCE RECORD

3 Years Growth Total Return



Cumulative Total Return

	Fund (%)	Rank
1 - Month (31 August 2011 - 30 September 2011)	-3.98	12/84
6 - Month (31 March 2011 - 30 September 2011)	-8.52	18/83
1 - Year (30 September 2010 - 30 September 2011)	-2.77	51/82
3 - Year (30 September 2008 - 30 September 2011)	45.04	27/75
5 - Year (30 September 2006 - 30 September 2011)	61.80	28/68

* Source : Lipper(G) - Category of Equity Malaysia - Non Islamic

High/Low NAV (RM)

	High	Low
1 - Month (31 August 2011 - 30 September 2011)	0.8564	0.7791
6 - Month (31 March 2011 - 30 September 2011)	0.9174	0.7791
1 - Year (30 September 2010 - 30 September 2011)	0.9455	0.7791
3 - Year (30 September 2008 - 30 September 2011)	0.9455	0.5759
5 - Year (30 September 2006 - 30 September 2011)	0.9817	0.5759

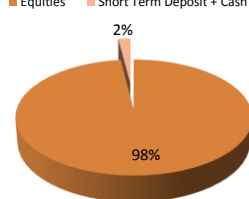
Income Distribution

	Net (sen per unit)
2009	8.88
2010	9.00

Source : Extracted from the annual report of AMBILTF which has been audited by our external auditor

Asset Allocation as at 30 September 2011

Equities Short Term Deposit + Cash



Equities

Consumer Products	5.27
Industrial Products	6.65
Construction	2.90
Infrastructure Property Co.	5.38
Trading/Services	33.32
Finance	36.52
Plantations	7.97
TOTAL	98.01

Top 5 Largest Holdings in Equity

- 1) MALAYAN BANKING BERHAD
- 2) PUBLIC BANK BERHAD
- 3) CIMB GROUP HOLDINGS BERHAD
- 4) SIME DARBY BERHAD
- 5) AXIATA GROUP BERHAD

Based on the fund's portfolio returns as at September 15, 2011, the Volatility Factor (VF) for this fund is 14.6 and its Volatility Class (VC) is classified as "High" (source: Lipper). The VF means there is a possibility for the fund in generating an upside return or downside return around this VF. The VC is assigned by Lipper based on quintile ranks of VF for qualified funds. The fund's portfolio may have changed and there is no guarantee that the fund will continue to have the same VF or VC in the future. Presently, only funds launched in the market for at least 36 months will display the VF and its VC.

Investors are advised to read and understand the contents of the Master Prospectus dated 17 September 2011 before investing. This Prospectus has been registered and lodged with the Securities Commission. Among others, investor should consider the fees and charges involved. The price of units and distributions payable, if any, may go down as well as up. Past performances of the fund should not be taken as indicative of its future performance. Units will only be issued on receipt of an application form referred to in and accompanying the Prospectus, which is obtainable at Amanah Mutual Berhad office or any other IUTA branches appointed by the Manager.